

USER MANUAL

Keypad Secure USB Drive

Dear user

Thank you for selecting the **Verbatim Keypad Secure USB Drive** as your external data storage device.

For optimal use and performance we advise you to read this manual carefully before using this product.

Please note: this manual is a general manual which is used for several Verbatim products. Product pictures shown in this manual may differ from the device you purchased.

Contents of the box

Please check the contents of the box. All articles included in this box are listed on the back of the packaging.

Need assistance? Have questions?

If you have a question concerning this product, need information on other Verbatim products or require technical assistance, please contact the Verbatim Support Centre. Please visit www.verbatim.com/support for details.

Warning!

All rights reserved. The products named in this manual are only used for identification purposes and may be trademarks or registered trademarks of the respective companies. This device was designed for home or office use.

Warning! This device is equipment complying with EN55032 class A. This equipment can cause radio disturbances in a residential area. If this is the case, the user has to take appropriate measures and assume all responsibility and costs for. It may not be used near or with any life-sustaining systems.

Verbatim cannot be made liable for any damages, loss of data or damage following thereof -whatsoever (including, without limitation, damages for loss of business profits, business interruption, loss of business information, or other pecuniary loss) arising out of the use of or inability to use this Verbatim product, even if Verbatim has been advised of the possibility of such damages.

We reserve the right to upgrade our products in keeping with technological advances.

Table of Contents

General Information.....page 4

Chapter 1

Operating Instructionpage 6

Chapter 2

Quick Operating Guidepage 7

Chapter 3

Change passcodepage 8

Chapter 4

Erase USB Drive and set up a new passcodepage 9

Chapter 5

Initiate and format your Verbatim USB Drivepage 10

Rightspage 12

FCC Compliancepage 13

WEEE Noticepage 13

CE Declarationpage 14

RoHS Compliancepage 14

General Information

Features:

- Supports USB Super-speed (5Gbps) / High-speed (480Mbps) / full-speed (12Mbps) operation
- Supports Windows 7 / 8 / 10, Mac OS X 10.4 or higher
- Includes 256-bit AES Hardware Encryption
- Built-in keypad for secure passcode input
- LED power / encrypted status indicators
- Simple setup and installation

Specifications:

- Interfaces: USB 3.1 GEN 1 / USB 3.0
- Supports USB SuperSpeed (5Gbps) operation
- Case Material: Plastic + Aluminum
- LED Indicator: Power, USB activity and encrypted status

Environmental:

- Power Requirements: DC5V supplied by the computer
- Operating Temperature: 5 °C to 50 °C
- Storage Temperature: -40 °C to 70 °C
- Operating Humidity: 5% to 90%, non-condensing

System Requirements:**PC:**

- Minimum Intel Processor Pentium II/50MHz, 64MB RAM
- Windows 7 / 8 / 10
- Active USB port

MAC:

- Minimum Apple G processor, 64MB RAM
- Mac OS 9.1, 9.2, 10.1.5, 10.2, 10.3
- Active USB port

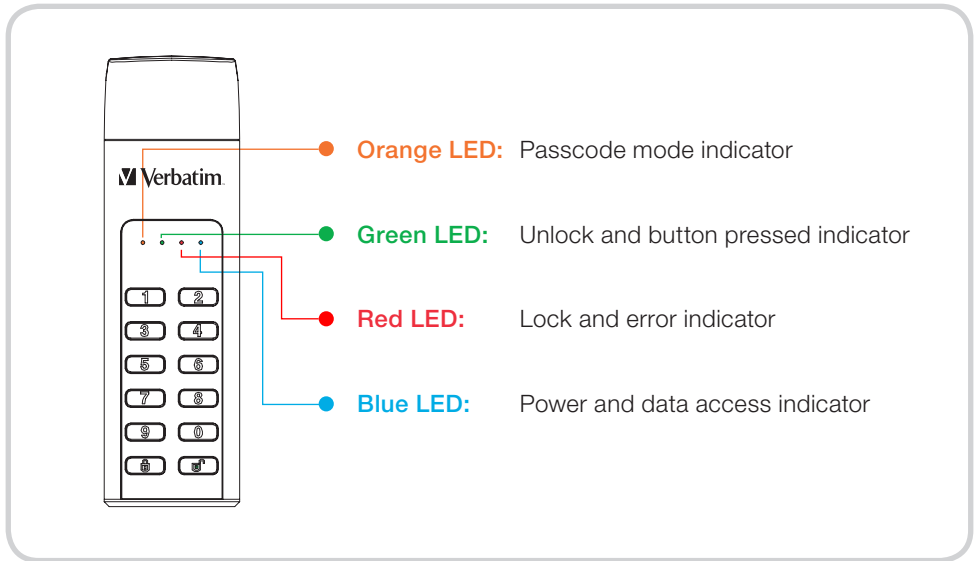
Package Contents:**Verbatim Keypad Secure USB Drive:**

- Verbatim Keypad Secure USB Drive
- USB-A to USB-A Extension Cable
- Quick Installation Guide
- User Manual (pre-loaded to the drive)

Verbatim Keypad Secure USB-C™ Drive:

- Verbatim Keypad Secure USB-C™ Drive
- USB-C™ to USB-C™ Extension Cable
- Quick Installation Guide
- User Manual (pre-loaded to the drive)

Chapter 1: Operating instruction



The LED behaviors:

Orange LED: will continuously brighten when in passcode mode (creating or changing passcode) and turns off when complete.

Green LED: will blink once when the button is pressed and will continuously brighten when unlocked.

Red LED: will blink when the passcode or operation has been entered incorrectly and will continuously brighten for lock mode/ turn off after unlock.

Blue LED: will continuously brighten when the power is on and blinks when in data access mode.

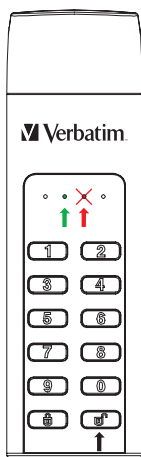
Chapter 2: Quick Operating Guide


Note

For the security of your data we highly recommend you change the default passcode. Passcode must be between 5 and 12 digits long.

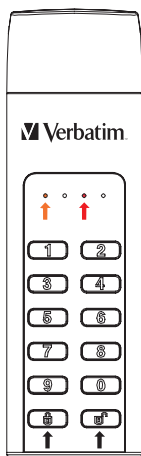
Warning






After 20 failed passcode attempts the device will lock and initialise the USB Drive, which will require re-formatting. Please refer to “Initiate and format your Verbatim USB Drive” section and follow the steps indicated.



1. Connect the encrypted USB Drive to your computer.
2. Enter default passcode, then press  button to confirm it .
(Default passcode is “00000”)
3. At this time the **red LED** should remain off and the **green LED** should be lit.
The USB Drive has been unlocked successfully.
4. Open “My Computer” to see your external USB Drive is ready to use.

Chapter 3: Change passcode

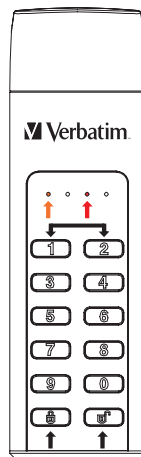





1. Press and hold  then connect the USB Drive with your computer until the **red LED** and **orange LED** light up. You can now release the  button.
2. Enter the existing passcode (Default passcode: "00000") and press  to confirm. The **orange LED** will turn off.
3. Type your new passcode and confirm by pressing key .
4. Retype your passcode set in step 3 and press  again until the **red LED** turns off.
5. Your device is now unlocked again.

Chapter 4: Erase USB Drive and set up a new passcode

Note

Please back-up your data before setting a new passcode. For the safety of your data, setting a new passcode will initialise the USB Drive. To format the USB Drive please follow the steps under “Ready to use”.



1. Press and hold key 1 and 2 simultaneously then connect the USB Drive with your computer. Release both keys as soon as the **red LED** lights up.
2. Now press  for 5 seconds until the **orange LED** lights up.
3. Type your new passcode and confirm by pressing , the **orange LED** will turn off.
4. The passcode is set.
5. Retype your new passcode set in step 3. And press , the **red LED** will turn off.
6. Your device is now unlocked.
7. With the new passcode being set up, the volume is initialised. To format please follow the instructions on the following pages.

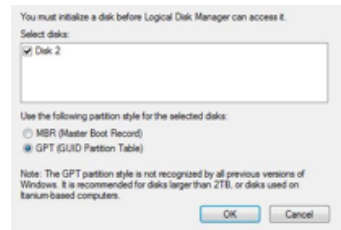
Chapter 5: Initiate and format your Verbatim USB Drive

Note

Please note that the following processes only apply after creating a new passcode as described in chapter 4!

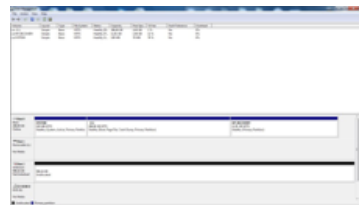
Windows 7 / 8 / 10

1. Click with the right mouse button on the "My Computer" icon on your desktop.
2. Select the option "Manage".
3. Select the option "Storage" -> "USB Drive Management".
4. Your system's USB Drive Management will automatically recognise a drive not being initiated.
5. Choose GPT (GUID PARTITION TABLE) for the partition style and confirm by clicking on "OK".



Since the USB Drive needs to be unlocked with every system start, choosing MBR is not recommended!

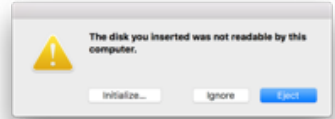
6. Choose the USB Drive, which is now "unallocated".



7. Click with the right mouse button on the "unallocated" area and select the option "New Partition". The "New Partition Wizard" opens.
8. The installation wizard will guide you through the formatting process.
9. Tip: The presets of this installation wizard do not necessarily need to be changed. You may just want to change the USB Drives description and choice for a file system.
10. After the installation process has finished the USB Drive should appear again automatically showing the assigned drive letter and name.

Mac OS X

1. Once your USB Drive is connected to your Mac and unlocked, OS X will recognise an unreadable USB Drive.



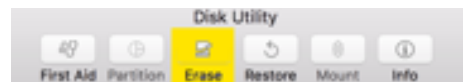
2. Select the button “Initialise...” to start USB Drive Utility.
3. In USB Drive Utility you need to select the specific external USB Drive.

Please note that the Keypad Secure USB will lose its original type description, name and branding. To avoid false selections please disconnect other external volumes before implementing the next steps. Do not select any internal volumes.

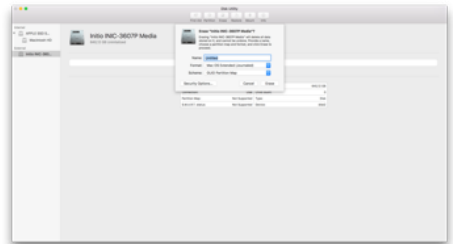
4. Select the only external USB Drive available.



5. Chose Erase from the USB Drive Utility tool bar to get to the formatting dialog box.



6. In the next dialog box you can assign a USB Drive name and a file format.



7. Click on “erase” to start the formatting process.

Rights

Copyright © 2019 Verbatim GmbH. No part of this document may be reproduced in any form or by any means, for any purpose, without the express written permission of Verbatim GmbH. All rights reserved.

All other brands and product names referenced herein are property of their respective owners.

Note

Verbatim GmbH may at any time revise the content of this user guide without further notice.

WEEE Notice

The Directive on Waste Electrical and Electronic Equipment (WEEE), which entered into force as European law on 13th February 2003, resulted in a major change in the treatment of electrical equipment at end-of-life.



The WEEE logo (shown at the left) on the product or on its box indicates that this product must not be disposed of or dumped with your other household waste. For more information about electronic and electrical waste equipment disposal, recovery, and collection points, please contact your local municipal household waste disposal service or shop from where you purchased the equipment.

CE Declaration

Complied the requirements set out in the Council Directive on the Approximation of the Laws of the Member States relating to Electromagnetic Compatibility (2014/30/EC) and Low Voltage Protection 2006/95/EC.

This declaration applies to all specimens manufactured identical to the model submitted for testing/evaluation.

EN 55032:2012+ AC:2013 (Class B)

EN 61000-3-2:2014

EN 61000-3-3:2013

AS/NZS CISPR 32:2013

EN 55024:2010

IEC 61000-4-2: 2008

IEC 61000-4-3: 2006+ A1:2007+ A2:2010

IEC 61000-4-4: 2013

IEC 61000-4-5: 2014

IEC 61000-4-6: 2013

IEC 61000-4-8: 2009

IEC 61000-4-11: 2004

RoHS Compliance

This product is in compliance with Directive 2011/65/EU of the European Parliament and of the Council of 18 December 2006, on the restriction of the use of certain hazardous substances in electrical and electronic equipment (RoHS) and its amendments. Substances of Very High Concern (SVHC) including 169 substances contained in Candidate List of June 20th 2016 are not present in this product range above permitted levels.