

Table of Contents

EN

General Information	page	4
Precautionary measures	page	5
Verbatim Hard Drive	page	6

Chapter

Hardware Installation	page	7
-----------------------------	------	---

Chapter

Driver Installation	page	7
---------------------------	------	---

Chapter

Installation of the application software	page	8
--	------	---

Chapter

Partitioning your Verbatim Hard Drive	page	11
---	------	----

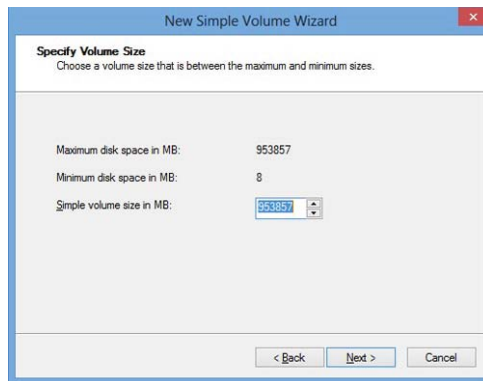
Chapter

Limited Warranty Terms	page	20
Rights	page	20
FCC Compliance	page	21
WEEE Notice	page	21
CE Declaration	page	22
RoHS Compliance	page	22

6. Select "Primary partition" and click on "Next". (Windows XP)

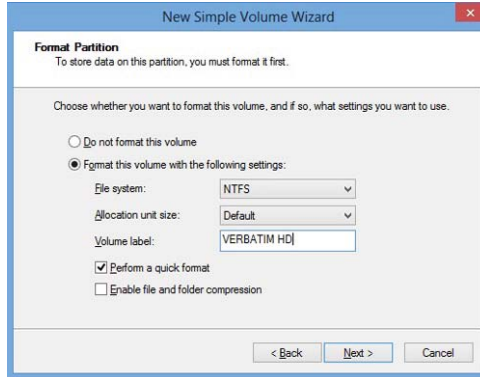


7. Now you can adjust the size of your partition. Click on "Next" if only one partition is to be created. See next chapter (Creating two or more partitions on the Verbatim Hard Drive under Windows 7/8/10) on how to create more than one partition.

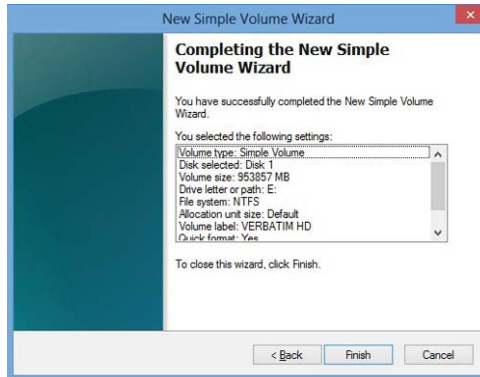


8. Assign a drive letter to your hard drive. Normally you can use the default options. Click on "Next".

9. Select the formatting option "Format this partition with the following settings". Choose either "FAT32" (< 32 GB) or "NTFS", the "Allocation unit size" should remain on "Default". Finally select "Perform a quick format" and click on "Next". **EN**



10. Click on "Finish" to complete the partitioning of your Verbatim Hard Drive. Your Verbatim Hard Drive will be formatted now and is ready-to-use afterwards.

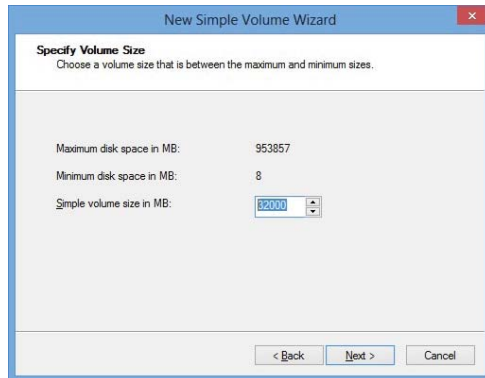


Creating two or more partitions on the Verbatim Hard Drive under Windows 7 / 8 / 10 **EN**

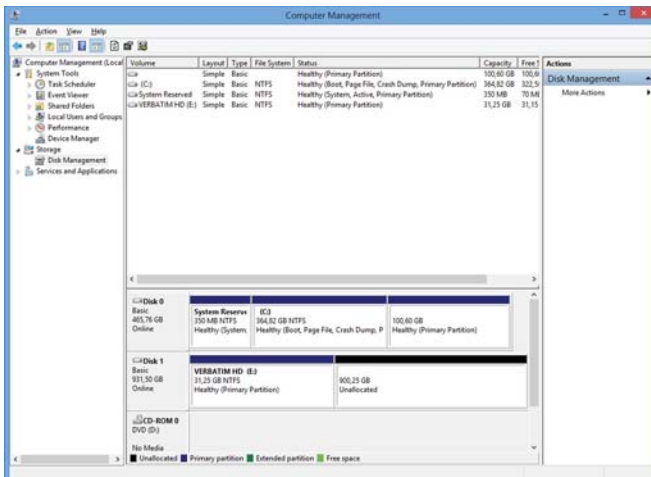
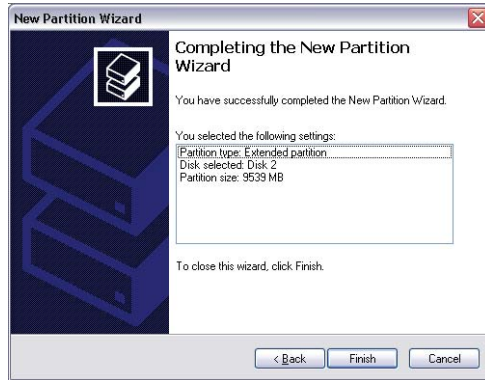
1. Repeat the steps from the previous chapter (Creating a partition on the Verbatim Hard Drive under Windows 7/8/10) for creating the first partition.
2. Click with the right mouse button on the "My Computer" icon on your desktop.
3. Select the option "Manage".
4. Select the option "Storage" -> "Disk Management".
5. Right-click on the unallocated space of your Verbatim Hard Drive and select the option "New partition". The "New Partition Wizard" opens. Click on "Next".
6. Select "Extended partition" and click on "Next". (Windows XP)



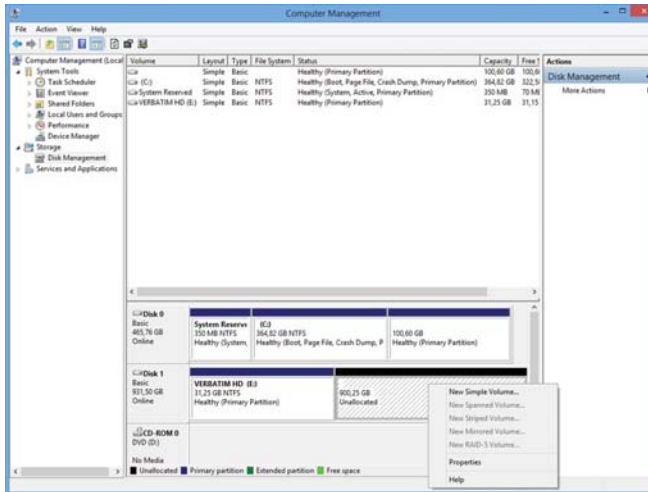
7. Now you can adjust the size of your partition. Enter the size and click on "Next"



8. Click on "Finish" to create the "Extended partition". The unallocated space now changed to "Free space". **EN**



9. Right-click on "Free Space" and select "New Logical Drive". The "New Partition Wizard" opens. Click on "Next". **EN**

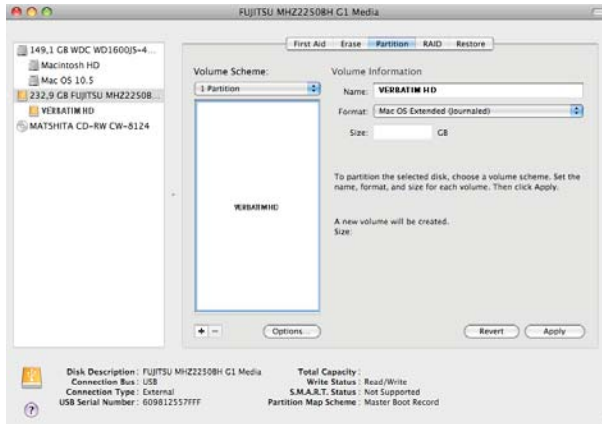


10. "Logical drive" is already selected. Click on "Next".
11. Specify the partition size and click on "Next".
12. Assign a drive letter and click on "Next".
13. Select the formatting option "Format this partition with the following settings". Choose either "FAT32" (< 32 GB) or "NTFS", the "Allocation unit size" should remain on "Default". Finally select "Perform a quick format" and click on "Next".
14. Click on "Finish" to complete partitioning. Your partition will be formatted now and is ready-to-use.

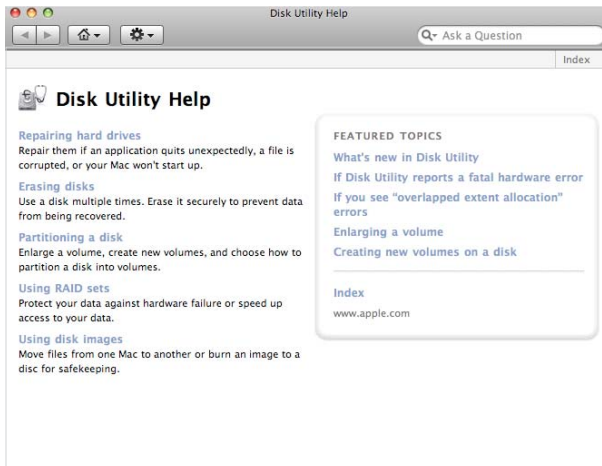
Note: If you select NTFS as file system, the data of your Verbatim Hard Drive can be read only under Mac OS X. There is no possibility to write data.

Partitioning your Verbatim Hard Drive under Mac OS X

1. Open the "Disk Utility". This can be found in "Applications" → "Utilities".
2. Click on the tab "Partition".



Here you can setup the partition settings and partition the drive according to your settings (e.g. Mac OS Extended). Detailed information how to use the Disk Utility can be found in the help:



Limited Warranty Terms

EN

Verbatim GmbH warrants this product to be free from defects in material and workmanship for a period of 2 years from date of purchase. This warranty excludes batteries. If this product is found to be defective within the warranty period, it will be replaced at no cost to you. You may return it with your original cash register receipt to the place of purchase or contact Verbatim.

Product replacement is your sole remedy under this warranty, and this warranty does not apply to normal wear or to damage resulting from abnormal use, misuse, abuse, neglect or accident, or to any incompatibility or poor performance due to the specific computer software or hardware used.

VERBATIM WILL NOT BE LIABLE FOR DATA LOSS OR ANY INCIDENTAL, CONSEQUENTIAL OR SPECIAL DAMAGES, HOWEVER CAUSED, FOR BREACH OF WARRANTIES OR OTHERWISE. This warranty gives you specific legal rights and you may also have other rights which vary from state to state or country to country.

NOTE: Verbatim GmbH may at any time revise the content of this user guide without further notice.

Rights

Copyright © 2019 Verbatim GmbH. No part of this document may be reproduced in any form or by any means, for any purpose, without the express written permission of Verbatim GmbH. All rights reserved.

All other brands and product names referenced herein are property of their respective owners.

FCC Compliance

This equipment has been tested and found to comply with the limits for a Class B digital device, pursuant to Part 15 of the FCC Rules. These limits are designed to provide reasonable protection against harmful interference in a residential installation. This equipment generates, uses and can radiate radio frequency energy and, if not installed and used in accordance with the instructions, may cause harmful interference to radio communications. However, there is no guarantee that interference will not occur in a particular installation. If this equipment does cause harmful interference to radio or television reception, which can be determined by turning the equipment off and on, the user is encouraged to try to correct the interference by one or more of the following measures:

- Reorient or relocate the receiving antenna.
- Increase the separation between the equipment and receiver.
- Connect the equipment into an outlet on a circuit different from that to which the receiver is connected.
- Consult the dealer or an experienced radio/TV technician for help

WEEE Notice

The Directive on Waste Electrical and Electronic Equipment (WEEE), which entered into force as European law on 13th February 2003, resulted in a major change in the treatment of electrical equipment at end-of-life.



The WEEE logo (shown at the left) on the product or on its box indicates that this product must not be disposed of or dumped with your other household waste. For more information about electronic and electrical waste equipment disposal, recovery, and collection points, please contact your local municipal household waste disposal service or shop from where you purchased the equipment.

CE Declaration

EN

EC Declaration of Conformity

Complied the requirements set out in the Council Directive on the Approximation of the Laws of the Member States relating to Electromagnetic Compatibility (2014/30/EC) and Low Voltage Protection 2006/95/EC.

This declaration applies to all specimens manufactured identical to the model submitted for testing/evaluation.

EN 55032:2012+ AC:2013 (Class B)

EN 61000-3-2:2014

EN 61000-3-3:2013

AS/NZS CISPR 32:2013

EN 55024:2010

IEC 61000-4-2: 2008

IEC 61000-4-3: 2006+ A1:2007+ A2:2010

IEC 61000-4-4: 2013

IEC 61000-4-5: 2014

IEC 61000-4-6: 2013

IEC 61000-4-8: 2009

IEC 61000-4-11: 2004

RoHS Compliance

This product is in compliance with Directive 2011/65/EU of the European Parliament and of the Council of 18 December 2006 , on the restriction of the use of certain hazardous substances in electrical and electronic equipment (RoHS) and its amendments. Substances of Very High Concern (SVHC) including 169 substances contained in Candidate List of June 20th 2016 are not present in this product range above permitted levels.