

USER MANUAL
GREEN BUTTON SOFTWARE

Warning !

All rights reserved. The products named in this manual are only used for identification purposes and may be trademarks or registered trademarks of the respective companies.

Warning! Verbatim cannot be made liable for any damages, loss of data or damage following thereof -whatsoever (including, without limitation, damages for loss of business profits, business interruption, loss of business information, or other pecuniary loss) arising out of the use of or inability to use this Verbatim product, even if Verbatim has been advised of the possibility of such damages.

We reserve the right to upgrade our products in keeping with technological advances.

Chapter: Verbatim GREEN BUTTON software (Mac)

Introduction

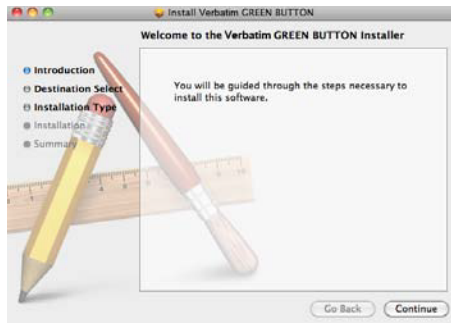
To save energy and increase lifetime of your Verbatim hard disk, the hard disk can be sent to suspend mode during idle periods.

The Verbatim GREEN BUTTON software allows activating the suspend mode and defining after what time the hard disk of your external Verbatim hard disk will be sent to suspend mode.

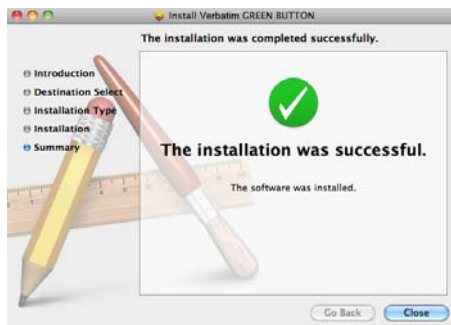
Note: When the hard disk is in suspend mode, it might take some seconds until the hard disk is resumed and accessible again!

Installation

1. Run "Start Mac" from your Verbatim Hard Disk Drive and go to Software Installation -> GREEN BUTTON.



2. Click on "Continue" to proceed.



3. Click on "Close" to finish the software installation.

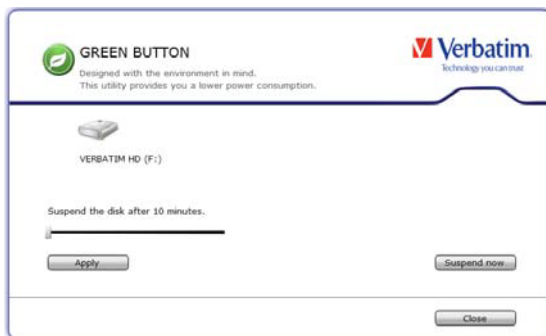
Using the software

When the software is started, it is checked whether a Verbatim hard disk is connected or not.

If no hard disk is connected, the following screen appears:



Connect a Verbatim hard disk drive to your Mac and the following screen appears:

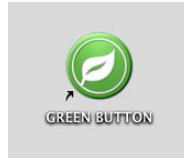


- By default the suspend time is set to 10 minutes. Move the slider to change the suspend time. When the slider is moved to the rightmost position, the hard disk will never go into suspend mode.
- When clicking on "Apply", the suspend time will be set.
- When clicking on "Close", the suspend time will be set and the software will be minimized to the Dock.

Desktop Icon

EN

Double-click on the "GREEN BUTTON" icon on your desktop to start the software.



FAQ

In what situations can an external hard disk not be sent to Sleep mode?

If a software that is running in the background has access to the hard disk or is monitoring the hard disk (e.g. a backup software), it might happen that the external drive cannot be sent to Sleep mode.